

Celebrity
British Craftsmanship

Operating and Care Instructions



Thank you for
choosing Celebrity

Please take the time to read these **‘Operating and Care’** instructions before use.

All recliner models have moving parts, it is important that you pay particular attention to the **‘Safety’** section in this booklet.

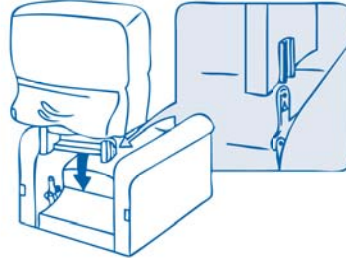
Please keep these instructions for future reference

Assembly

To enable easy access through narrow entrances the back and base of the recliner (and selected fixed settees) are detachable. If the product has not been assembled or installed for you, please follow the instructions below:

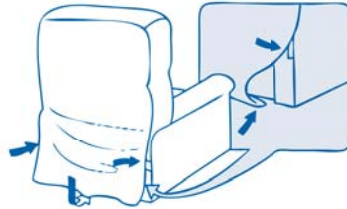
STEP 1:

Hold the recliner back and lift the fabric flap with both hands. Line up the male and female brackets. Apply downward force to the top of the back (one side at a time) to ensure correct interlocking of the brackets. (To remove back pull sharply upwards. If necessary use a small screwdriver to free the male connector flange).



STEP 2:

Attach the Velcro back flap by pulling the fabric downwards to ensure a clean finish to the chair.



Recliners operated by a TP2 Transformer

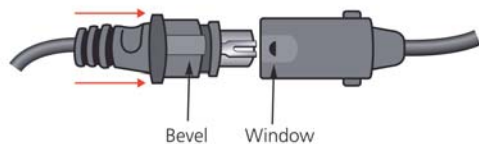
⚠ Transformer Operated Recliners Emergency Battery back-up:

Insert the domestic batteries supplied into the transformer and replace the cover. These batteries are solely intended for emergency use and only have enough power to return the chair to the rest position once. After one cycle they will be discharged and need replacing. We also recommend replacing the batteries every 12 months.



Connecting to the power supply

Connect the transformer to the cable coming out of the back of the chair. To do so, align the cable quick release clip with the pin socket on the end of the transformer cable. Ensure that the prongs on the socket align with the quick release clip. Insert the plug lead into the transformer. Now connect the plug into the wall socket and switch on the electrical supply. The green LED on the transformer should now light up showing that power is flowing into the powered recliner.



*Ensure that the cable is pushed fully in and the bevel on the male connector must be pushed past the window in the female housing (see diagram).

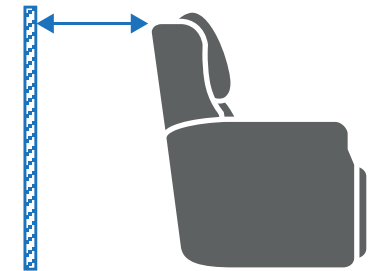
Only use a transformer unit supplied by Celebrity. Please do not use any other make of transformer as this can result in irreparable damage to the motor and will invalidate your warranty. Do not tamper with the sealed transformer.

Positioning your recliner

In order to prevent damaging your recliner we advise that you follow these simple guidelines.

Always ensure that the recliner is placed far enough away from a wall to allow the back and footrest to fully recline without hitting a wall or obstruction. Anything that restricts the movement of the chair can cause damage to the frame and action making the chair inoperable. This will invalidate your warranty. On powered models an obstruction can cause a strain on the motor.

Recliner Action	Distance between the recliner and the wall
Manual Recliner	7.5 cm / 3 inches
Single Motor (Powered)	13 cm / 5 inches
Dual Motor (Powered)	37 cm / 14.5 inches
Single Motor Riser Recliner	23 cm / 9 inches
Dual Motor Riser Recliner	42 cm / 16.5 inches
Cloud Zero Riser Recliner	52cm / 20.5 inches



Distance from the wall

NB. All measurements are approx. and based on Standard size recliners.

Recliners fitted with an In Chair Battery



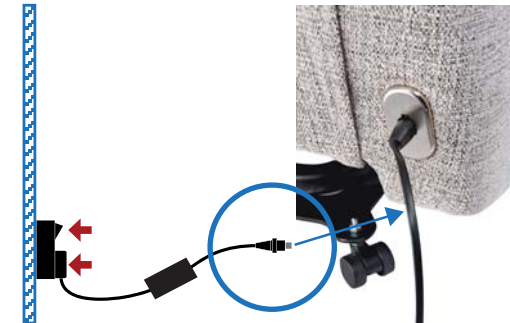
BEFORE FIRST USE

Connect the charging cable to the recliner and connect the plug to the power supply. Always charge fully before first use. This should take around 4 hours.

Once fully charged disconnect the transformer from the chair. When the recliner action starts to slow or the handset begins to flash this is an indication that the battery needs recharging.

NB. The battery charge may drain naturally if the recliner has not been used for longer periods of time. *The TBB3 in chair battery pack is guaranteed for 2 years.

⚠ **Unauthorised use:** To prevent any accidents we do not recommend leaving an unauthorised person (e.g. children etc.) in the same room as a powered recliner fitted with a rechargeable battery.



Operation of Manual and Powered Recliners

Manual Recliner

How to recline your manual recliner

- Sit as far back in to the seat as possible, making sure that the body weight is behind the midpoint of the chair.
- Release the latch (or handle) on the side of the chair to raise the footrest. It is important to sit as far back in the chair as possible to allow the recliner to operate efficiently. If you are not sat far enough back in the chair the footrest will not open to it's full extent, making it difficult to recline the back of the chair.
- To recline the chair back, push gently on the arms and move your back in to the chair.

To close the chair back to the seated position, simply lean forward and the chair back will return to the upright position.

To close the footrest apply pressure with the back of your legs and push the footrest back to the closed position. When fully back the footrest needs to click to secure the closed position.

The unique 'geometrically balanced' design of the Delta action allows you to use your body weight to stop the chair in any recline position. To do this, release the side latch mechanism as described above then gently inch backwards, stopping in the chair where you feel most comfortable. Your body weight should help stop the chair in your desired position.

We recommend that users with limited lower leg strength select from our powered recliner range.



Closed/Rest Position



Relax



Recline

Powered Recliner Handsets

We recommend that you take a few minutes to acquaint yourself with the workings of the chair by carrying out one complete operational cycle of the chair

Single Motor Riser Recliner

USB charging point.



Resets the chair to the closed/rest position.

Raises the chair back, closes the footrest and raises the chair to the lift position.

Lowers the chair from the lift position, opens the footrest and reclines the chair back.

Dual Motor Riser Recliner

USB charging point.



Resets the chair to the closed/rest position.

Reclines the chair back.

Raises the chair back.

Lowers the chair from the lift to the seated position and raises the footrest.

Lowers the footrest and raises the chair to the lift position.

Cloud Zero Riser Recliner

USB charging point.



Resets the chair to the closed/rest position.

Reclines the chair back.

Lowers the chair from the lift to the seated position and raises the footrest.

Tilts the chair back.

USB charging point
All handsets have a USB charging point at the top



Powered Recliner Keypads

Dual Motor Recliner



Reclines the chair back.

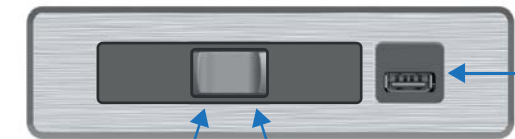
Returns the chair to the seated position.

Returns the footrest to the seated position.

Raises the footrest.

USB charging point.

Single Motor Recliner



Returns the chair back and lowers the footrest to the seated position.

Reclines the chair back and raises the footrest.

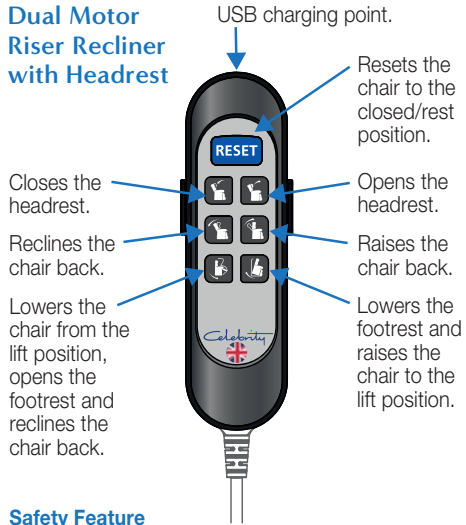
USB charging point.

All powered handset and keypad models have a charging point: 5.0 V 1.0 A.

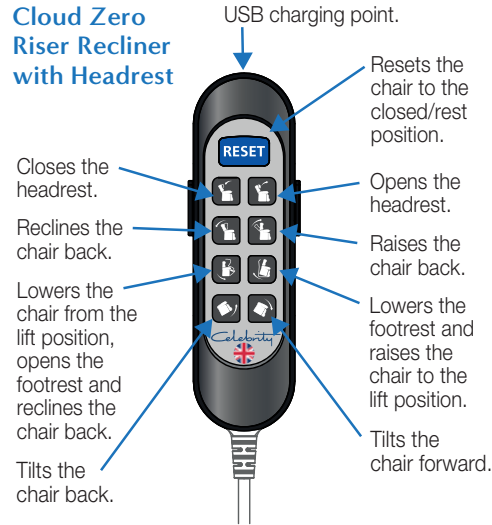
How to Operate Recliners with Adjustable Headrest and Lumbar

Recliners with Adjustable Headrest

Dual Motor Riser Recliner with Headrest



Cloud Zero Riser Recliner with Headrest



Safety Feature

The adjustable headrest is push only motor assisted and sprung loaded. For the headrest to return to the fully closed position you need to be seated in the chair. This safety feature helps prevent trapping when closing the headrest.



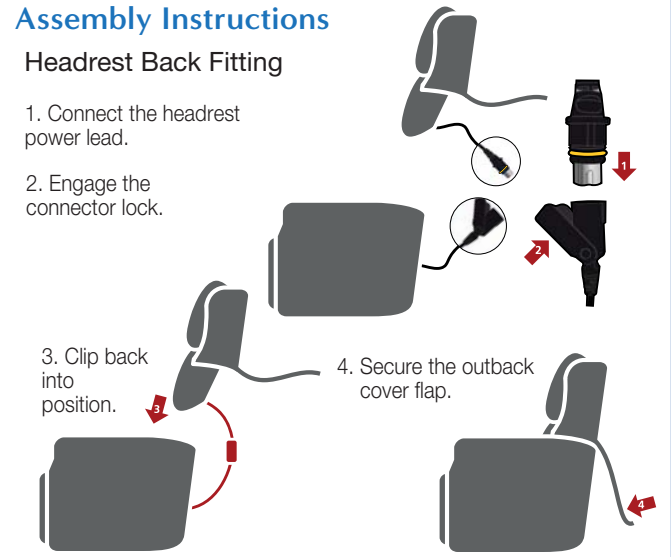
Assembly Instructions

Headrest Back Fitting

1. Connect the headrest power lead.
2. Engage the connector lock.

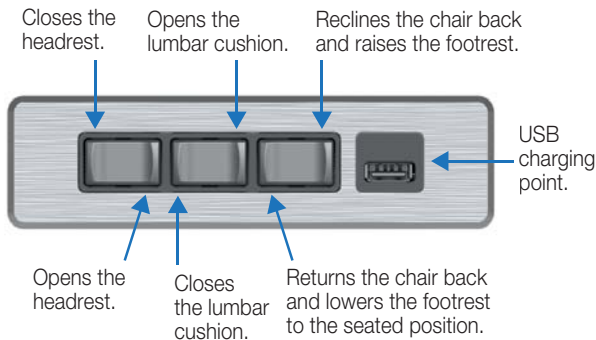
3. Clip back into position.

4. Secure the outback cover flap.



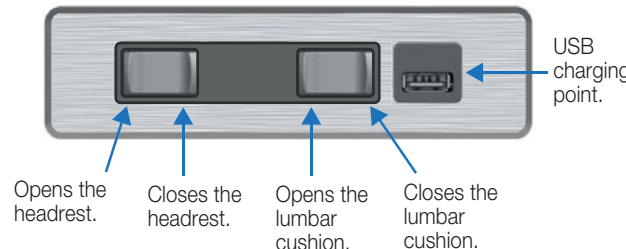
Recliners with Adjustable Headrest and Lumbar

Single Motor Recliner with Adjustable Headrest and Lumbar



Dual Motor or Cloud Zero Riser Recliner with Adjustable Headrest and Lumbar

Keypad operates the headrest and lumbar feature. Handset operates all other chair functions (Please see page 3 for Handset instructions).



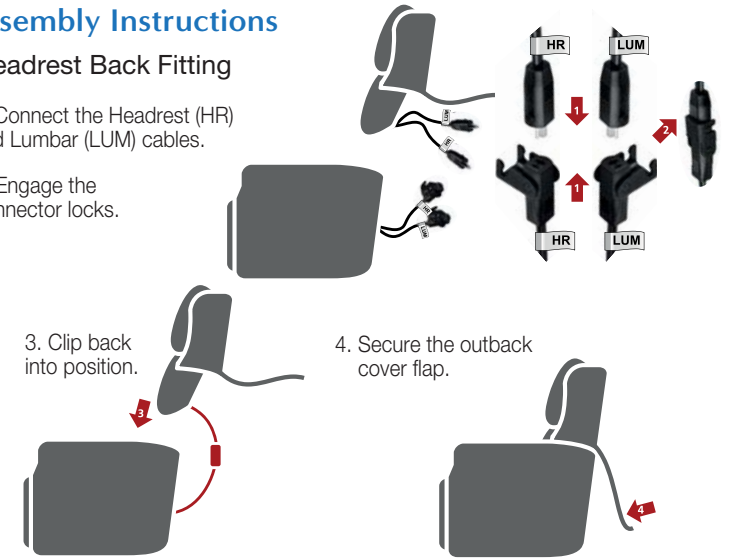
Assembly Instructions

Headrest Back Fitting

1. Connect the Headrest (HR) and Lumbar (LUM) cables.
2. Engage the connector locks.

3. Clip back into position.

4. Secure the outback cover flap.



Safety and General Guidance

Your reclining chair contains moving parts. It is necessary to exercise due care and attention when using Celebrity products. The following points highlight areas which must be followed to help ensure the safety of yourself and others.

IMPORTANT, READ CAREFULLY, RETAIN FOR FUTURE REFERENCE.

WARNING. This is an electrical item and should be treated with caution.

WARNING. The motion lockout control must be engaged when the chair is not in use.

WARNING. Always ensure that there is nothing to obstruct the free movement of the chair, for example children or pets, or solid objects, e.g. a wall.

WARNING. This chair is not suitable for use by children. Any children in the vicinity must be supervised at all times.

WARNING. Take care when adjusting positions to avoid trapping or pinching of body parts.

WARNING. Do not sit on footrest.

WARNING. Only the occupant or a responsible person should operate the chair.

WARNING. Exercise care when lowering into the chair as shock loads can severely damage the chair and the mechanism.

WARNING. To prevent accidental or unauthorised use, handset operated models incorporate a quick release feature. The handset may be removed by detaching the lead located inside the pocket making the chair inoperable. Always store the removed handset in a safe place, out of the range of children etc.

WARNING. Reclined furniture, due to the raised centre of gravity are more susceptible to tipping than fully closed chairs or settees. Never attempt to lean or reach out of the chair as excessive leaning could cause the chair to tip. Always get out to the chair to retrieve any articles from around the chair. Do not sit on the furniture arms, or the footrest when in the 'open' position.

WARNING. Only use the transformer unit supplied with your powered chair or settee. Do not use any other make of transformer as this can result in irreparable damage to the motor. Please do not tamper with the sealed transformer.



This product should only be used as a chair or settee, it is not a suitable substitute for a bed.

Please avoid sitting on the arms or footrest as this can cause structural damage.

Sitting on the edge of the seat cushion can cause the fillings to move and give a creased appearance to the seat. Should this occur gently push the fabric backwards to move the fillings back to their original position.

Your riser chair should not be used as a seat when in the raised position as this will invalidate your warranty. With the exception of our Cloud Zero 3 motor Riser Recliner.

We do not recommend the use of loose cushions with any reclining chair or settee as they may become lodged in the gap between the seat and back and inhibit the reclining action.

To prevent accidental damage or trapping when the footrest closes, each electrically powered chair incorporates a sprungloaded footrest. Should the footrest hit an obstruction on closing, it will pivot as shown to reduce pressure. The motor will continue to function until the action cycle is finished when it will automatically stop.

Always ensure that no objects are left under the chair.



Never attempt to repair or adjust the action mechanism yourself. Contact your Celebrity retailer for any service issues. Always ensure all electrical supply wires are free from obstruction and not trapped or twisted in any way. If any wires are damaged, always have them replaced by a qualified electrician.



Caring for your upholstery

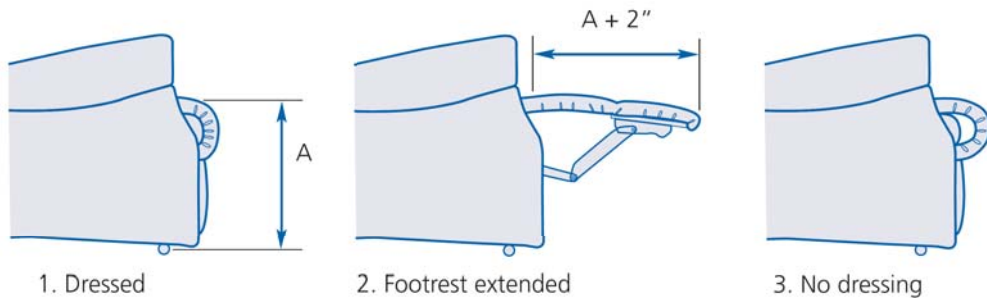
As a safety feature to prevent the seat quilt and back cushion getting trapped in the reclining mechanism all our recliner cushions are sewn in to place to prevent movement. This also ensures that the recliner offers support in the areas intended.

Dressing

We advise that regular 'dressing' of the back & quilt as described below will help maintain the original look and form of your recliner.

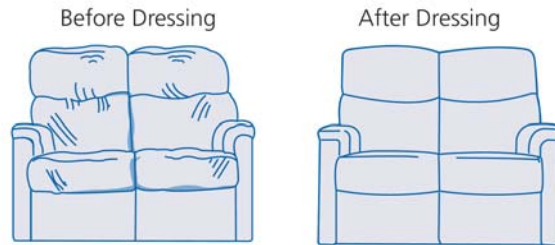
Knee Roll

When extended the recliner footrest elongates by up to 2 inches so there is extra fabric around the knee roll area when closed. We recommend that the seat quilt is dressed regularly to reduce the knee roll area over time developing an overhang.



Recliner Backs

After use always 'plump' up the seat back to re-distribute the fibres back in to place. On models with plainer design backs this is particularly important as the fillings are more likely to settle and need pushing back in to place.



Settee Seat Cushions

The movement of seat quilts on 2 and 3 seat settees will take place after use.

To re-align the quilts simply push the quilt towards the rear of the recliner.

If the quilt is not dressed regularly it is inevitable that if one side of the settee is used more, the sides will not line up until dressed.

All seat quilts are lined up in our factory prior to despatch, it is inevitable that the quilts will move once sat upon.



Cleaning your recliner

We recommend that you clean the fabric monthly by using a soft brush or by gently vacuuming. Regular cleaning is particularly important with chenille fabric. Due to the length of the pile in the material it can be 'crushed' with use and give the appearance of changing the colour or shade of the product. Never use a stiff fibre or metal brush as this can score and damage the pile of the fabric.

Fabric Appearance

Chenille covers, may appear darker or shaded in certain areas (this can be most noticeable on the arms and seat/back of the chair). This is due to the way the direction of the pile in the fabric reflects daylight and is a natural characteristic of this type of cover. Lightly brushing the pile in a different direction will help minimise (but not eliminate) this apparent 'shading' of the cover. Due to the make up of Chenille fabrics, the material has a tendency to crease and show crush marks during normal use. This can create changes in the shading of the material. This is caused by the pile of the fabric being moved in different directions and is an inherent characteristic of the material. Light brushing, by moving the pile in one direction will help reduce this.

Soiling

Wet cleaning of the fabric is not recommended. For stubborn stain removal we recommend seeking the service of a professional upholstery cleaning specialist.

Caring for Aquaclean Fabrics.

Aquaclean® technology is a revolutionary fabric treatment that allows you to clean stains using water only.

Please refer to the Aquaclean website for cleaning and care instructions.

www.aquaclean.com/en-gb

aquaclean[®]
fabrics for living

PLEASE NOTE THAT CELEBRITY CANNOT BE HELD RESPONSIBLE FOR ANY DAMAGE CAUSED BY CLEANING.

General

Whenever possible, ensure that your furniture does not come into contact with sharp objects, e.g. buckles, pet claws etc. which may snag the fabric. If snagging does occur, carefully cut off the threads with scissors; do not try to pull the threads off.

Please avoid sitting on the arms as this can cause structural damage to the product.

Sitting on the edge of the seat cushion can cause the fillings to move and give a creased appearance to the seat.

Sunlight

Upholstered furniture should not be exposed to direct sunlight for prolonged periods as it can cause the fabric to fade.

Frequently Asked Questions

Q. My health advisor has recommended that I have a bariatric pressure cushion. Is this suitable for use with a Celebrity recliner?

A. We do not recommend the use of a bariatric cushion with your Celebrity recliner. There is a possibility that the bariatric cushion could get caught in the chairs mechanism invalidating your guarantee.

Q. My chair has stopped working/has a fault. What should I do?

A. We recommend that you first check that power supply is getting to your powered chair and isn't just working from the back up battery. Take note of the batch chair ID number located on the label underneath or at the back of the chair. This will help to identify the model and manufactured date of your chair/settee. Contact the retailer you purchased your Celebrity furniture from and report the problem. The retailer will be able to assist with your enquiry and if necessary contact Celebrity on your behalf.

Q. Is a Celebrity recliner suitable as a substitute for a bed?

A. Celebrity recliners are not intended to be used as an alternative to a bed. Using a Celebrity recliner as a bed would invalidate your guarantee.

Q. Are arm protectors and back protectors available for my Celebrity furniture?

A. Celebrity have a range of accessories available including fabric arm and back protectors (antimacassar). These are available from your Celebrity stockist. Arm protectors are matched to specific ranges so the retailer will need the model size, range and fabric. If you are not 100%, the chair batch ID reference will help enable the retailer to advise the correct arm protectors you require.



Troubleshooting

Should your chair fail to operate please ensure that:

- The power supply has not been interrupted
- The plug socket is operating correctly
- The connection to the transformer unit is fully pushed in to the transformer (the light should be illuminated on the transformer).
- The supply cables are not damaged, entrapped or cut/worn.

On repair if any of the above have occurred, the cost of the repair will be charged to the customer.

Operational Problems : Powered Rising / Reclining chairs

Should you experience any operational problems with your chair please:

- Check that the chair is plugged in at the wall socket.
- Check the wall socket works by plugging in another working appliance, i.e. table lamp. This will help prevent an unnecessary call out.
- Check that the green LED on the transformer is lit. Should your recliner still not be working please contact your Celebrity retailer.



Never attempt to repair/interfere with the chair or any part of the mechanism. We advise that any checks of the motor should only be carried out by a qualified electrician or an upholstery repair specialist. If you have any doubt about any operational aspect of your chair please contact your supplying retailer.

Guarantee

Celebrity Motion Furniture Guarantee

We are so confident that we have selected the best components to use in our recliners we offer a 5 year guarantee on all Celebrity furniture. This guarantee covers the frame, action and all motor components, including motor, control box, transformer, handset supply leads and plug. (Excludes accidental damage or mis-use).

Factory fitted in chair batteries are guaranteed for 2 years.

All other parts carry a full 12 month guarantee against faulty workmanship.

We reserve the right to, at our discretion, repair or replace any such parts subject to:

- The product remains with the original purchaser and is not re-sold.
- The guarantee is not transferable.
- The product has been used for domestic use only. Use in hotels, let holiday homes or any commercial concern is excluded from the guarantee terms.
- The product has been used in accordance with these 'Operating and Care' Instructions and has not been mis-used or abused.
- The product has not been modified or repaired or shows evidence of an attempted modification or repair by any person not authorised by Celebrity.

The guarantee period is effective from date of manufacture of the product and proof of purchase will be required for any guarantee claim.

*Please note many fabrics will flatten with use and may show areas of darker shading. This is not a fault and can usually be rectified by gentle brushing.

The guarantee does not cover accidental damage in use to any part of the product e.g. USB port, fabric.



All Celebrity furniture is manufactured in Nottinghamshire, UK



Chairs and settees fitted with Mammoth Medical Grade™ foam Seating Technology

The areas as highlighted in grey identify where the Medical Grade™ foam is located. This foam is guaranteed for 5 years.



Should you need to report a problem with your furniture please contact the retailer you purchased your furniture from with the chair/settee batch ID number.

The batch ID number is located as shown for recliners or underneath your furniture on non reclining models.



We are always looking at new developments and ways to offer a product range reflective of our customer requirements. Should you have any comments regarding your purchase please contact our Customer Service Team.
Celebrity Motion Furniture Limited, Common Road, Huthwaite, Notts. NG17 2JY.
Tel No: 01623 440 626 info@celebrity-furniture.co.uk